

diiPArt | **iLK**

Design +
Engineering
Procurement
Construction

Contents

Part A. Corporate Overview

- 02 Vision & Strategy
- 04 Business Scope
- 06 Global Presence
- 07 Board of Directors
- 08 Human Resources, Health, Safety & Environment
- 09 Quality, Certifications

Part B. Representative Projects

- 10 Completed Projects
 - 30 Projects in Progress
-
- 42 **Construction & Equipment List**
 - 45 **Contact**

DIIPART | İLK OFFERS A ONE- STOP SOLUTION FOR VALUE ADDED ENGINEERING, PROJECT MANAGEMENT AND CONSTRUCTION SERVICES.

diiPART | İLK's main duty has always been creating reliable and competitive engineering solutions for its clients. With the support of the experienced management organization combined of accomplished professionals, diiPART | İLK has all the components; management systems, technology, key personnel and financial strength to become a leading engineering, design, and construction service provider in Azerbaijan, Haiti, Kazakhstan, Malaysia, Turkmenistan, Turkey, Russia, U.A.E. and Venezuela.

diiPART | İLK serves its clients with commitment and dedication to successfully deliver the projects while keeping in mind the responsibility of sustainable development as a citizen. Our vision is to be known as a professional partner that provides engineering, design, construction and project management solutions in the markets we operate.

diiPART | İLK management is excited about the business opportunities that exist in recent markets and sure to chase its business acquisition and fulfilment plans. We are glad to see our management system with a consistent focus on improving human capital, which is required to meet the current and future business demands developing as planned.

It is time for our valued customers to decide, how far diiPART | İLK has succeeded in meeting or exceeding their expectations. Our understanding from continuing project awards from our clients, we have successfully accomplished our goal. Our new goal is to perfect the standards and quality we are carrying out at the moment.

Since we are able to support our clients in all regions we operate, we can continually monitor our performance to ensure that we are meeting our customer's requirements, and with this in mind, provide our clients with custom-made solutions. Our top priority is our client's satisfaction; this motivates our daily and future business activities.

Vision & Strategy

VISION

To introduce perfect solutions in the light of high market reputation with high quality in methods for making life easier and more efficient.

- Excellence in every aspect.
- Positioning itself as one of the main players in the sectors and regions taken part.
- To give the best service for its clients and country.

MISSION

To complete contracts in time with agreed properties, respecting the public, the environment and business while continuing to grow.

- Making strong and enduring relationships with clients.
- Meeting the needs of clients by offering diversified portfolio of services and finding most optimized solutions.
- Improving quality continuously in services offered to guarantee best outcome.
- Keeping zero accidents as main goal and maintaining safety measures at the highest level.
- To deliver best service anytime, anywhere.
- Contribution to the economy of the countries by providing the best service possible.
- Executing sustainable projects as we are planning long term good of company, customer and the world.

STRATEGY

As one of the most preferred Contractor in Central Asia, our strategy is to continue our stable growth in countries we operate, preserve our long-term relationships with our clients and be pioneer in engineering and solutions provided.

- To preserve the active and competitive role in markets operated.
- To benefit from our past experiences.
- To be flexible for a variety of customer needs





COMPETITIVE ADVANTAGES

01 Contracting

- Local know-how.
 - Different type of projects experience in Central Asia.
 - Global and reputable clients.
 - Flexibility.
-

02 Engineering & Procurement

- Turnkey projects.
 - Specialization in wide variety of engineering disciplines.
 - Good knowledge of local material markets and long term based supply chain.
-

03 Project Management

- Efficient management of resources.
 - Fast mobilization.
 - Highly qualified, reliable and stable team
-

04 Quality & Safety

- High reputation in quality management.
 - Awarded for safety implementations.
-

05 Services

- Diversified portfolio of services.
- Optimized solutions.

Business Scope

1 > 2 > 3



Project

- Scheduling
- Expediting
- Accounting
- Documentation & Reporting
- Contract Controlling
- Cost Control
- Site Work Supervision
- Safety Management
- Tendering
- Budgeting & Estimations
- Quality Management
- Terms of Reference & Specifications

Consulting

- Certifications
- Permitting
- Project Registration
- Business License
- Feasibility Study

Contracting

- Engineering
- Design (PDP & DD)
- Geological Surveys
- Environmental Assessment Reports
- Piling & Foundation Works
- Civil & Structural Works
- Construction Works
- M&E Installation
- Equipment Procurement
- Finishing Works
- Demolition & Renovation
- Commissioning
- Maintenance & Warranty

Project Value Chain

Services Provided

Health, Safety & Environment / Quality Assurance & Control / Geographic Information Systems / Cost Estimation & Proposals / Conceptual & Preliminary Design / Detailed Design & Engineering / Planning & Scheduling / Procurement / Construction Management / Fabrication / Field Construction & Installation / Pre-Commissioning, Commissioning, Start-Up / Facilities Management / Operation & Maintenance

Industries

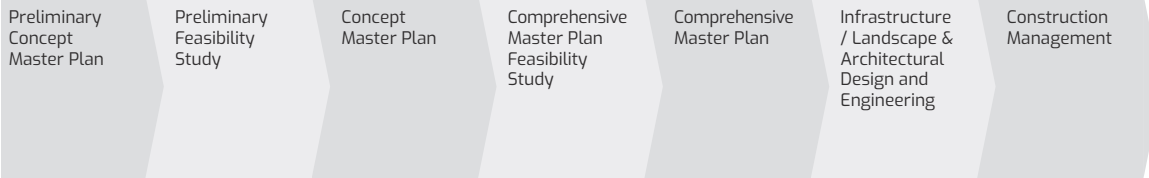
New city Planning & Development / Multifunctional Complex / Heavy Civil Works / Transportation, Roads & Bridges / Airports & Seaports / Networks & Infrastructures / Commercial & Institutional Buildings / High Quality Buildings / High Rise Buildings

Forms of Contract

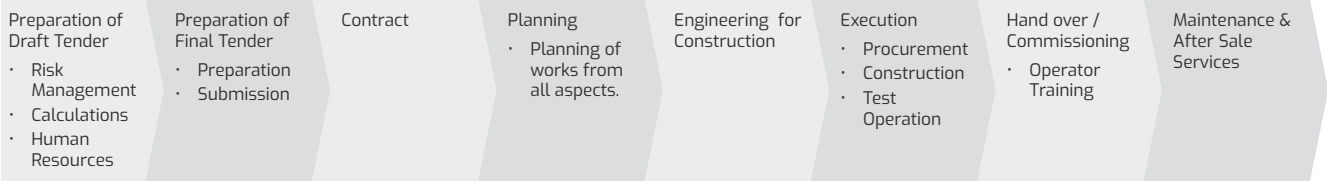
EPC Contracts / Convertible Lump Sum Turnkey Contracts (CLSTK) / Build, Own, Operate, Transfer (BOO, BOT, BOOT) / Design, Build / Cost Reimbursable / Re-measurable

Execution Procedure

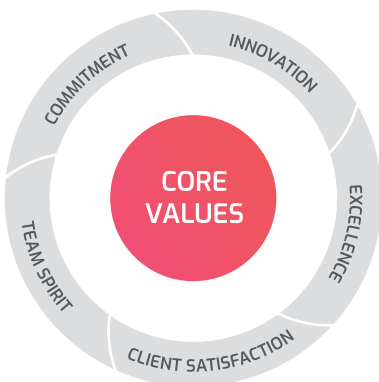
Design & Engineering



Construction



Core Values



Commitment

This is a promise to our clients, employees and communities that we will strive to make a positive contribution to the world while delivering exceptional business results.

Team Spirit

We believe in the power of teamwork. To work as one team, individual skills and qualities are recognized. Good communication, honesty and mutual respect is encouraged as it develops successful working relationships.

Innovation

Thinking differently applying innovative thinking and creativity has been a key driver in company's growth. We believe that there is always a better way to do things.

Excellence

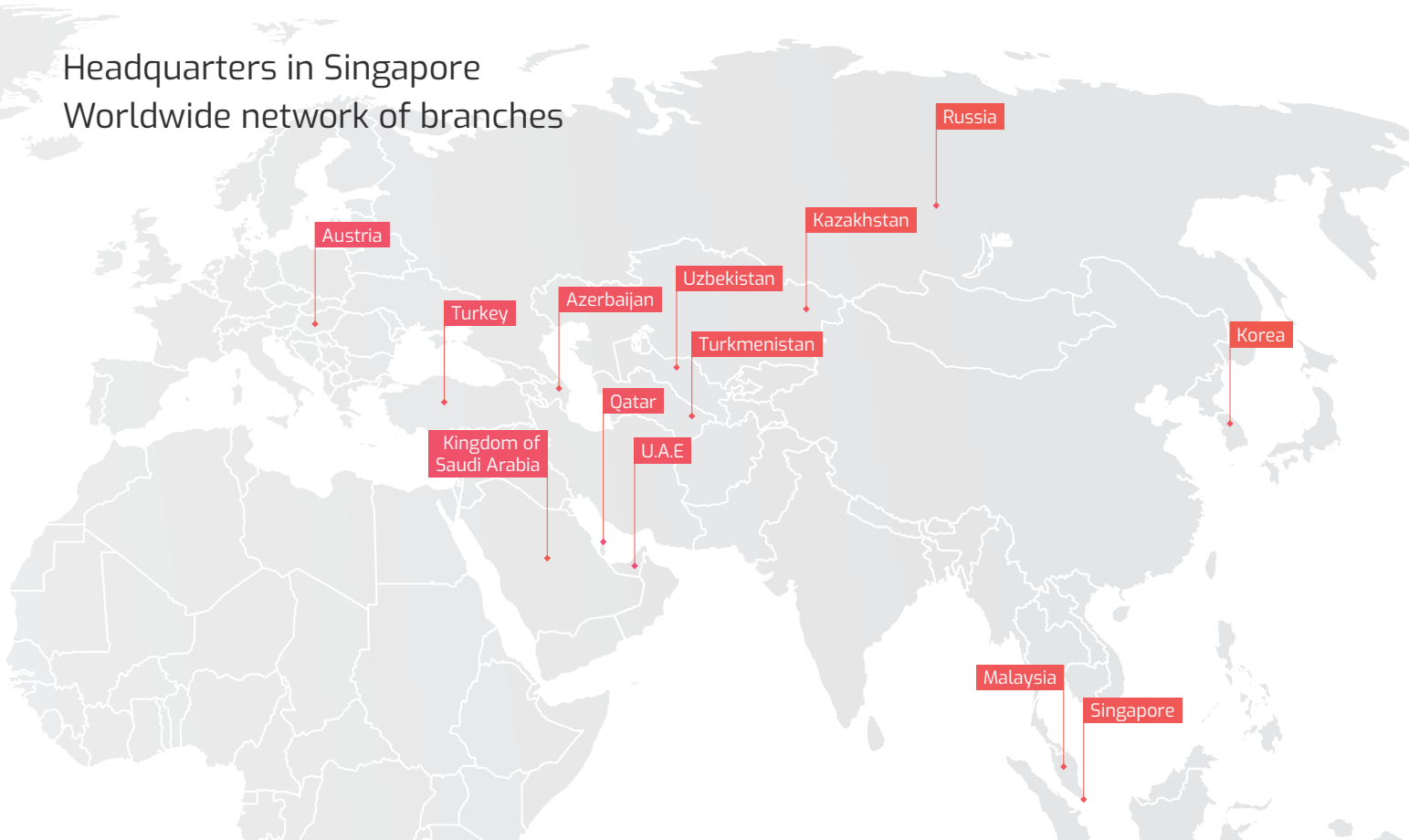
We will persistently create better ways of doing the things we do. We will not rest on our accomplishments, but will rather build on them in our personal and professional journey to be the best we can be and set new standards in our industry.

Client Satisfaction

Our client is our number one priority. We genuinely strive to listen to our clients to understand their needs, not simply what we can offer. We find ways to satisfy our clients and live up to our obligations to them. Client's requests and questions are addressed with a can-do attitude and earnest effort.

Global Presence

Headquarters in Singapore
Worldwide network of branches



diipART | İLK is one of the most preferred Design, Engineering and Construction Company in Central Asia.

diipART | İLK has been established to construct various superstructure, infrastructure, industrial and residential building projects in the countries of Singapore, Turkey and abroad. The first international office was established in Ashgabat, the capital city of Turkmenistan

diipART | İLK is now increasing its competitive strength in both national and international markets with its modern management concept, experienced and well qualified human resources.

As today's world of construction is heading towards a more competitive direction, cost, time and quality of construction are more significant than ever.

Therefore, to be well qualified and to have a long lasting vision, diipART | İLK has improved its system, organizational structure, made more utilization of IT technology and modern management techniques.

diipART | İLK has established long lasting relationships with its clients and suppliers based on professionalism and mutual trust.

Board of Directors

diiPART | ILK's success is in direct relation to the commitment, expertise and knowledge that our leadership team brings to its work. Our skills spring from broad experience and a diversity of backgrounds, which means fresh and varied perspectives managing every client project.

Our company's executive team is composed of motivated and enthusiastic individuals who have vested interest in finding value-driven, quality solutions for our clients while never losing sight of providing the best possible service. These executives take an active role in all aspects of diiPART | ILK's business and lend invaluable know-how and unwavering dedication to every client undertaking.

BOARD OF DIRECTORS

Alex Taehyun Kim

Chairman

Selami Erdogan

President

DIRECTORS

Ali Yanar

Vice President

Chris Chul Moon

Vice President

COUNTRY MANAGERMENTS

Jeff Dong Joon Song

Country Representative of Uzbekistan

Augustine Hyunkuk Kim

Country Manager of Singapore

BUSINESS DEVELOPMENT

Brandon Youngchan Sohn

General Manager, PM & CM

DESIGN & ARCHITECTURE

Peter Yoonchul Cho

Design Director

James Kim Nam Hwan

Project Manager

Fred Youngmin Kwon

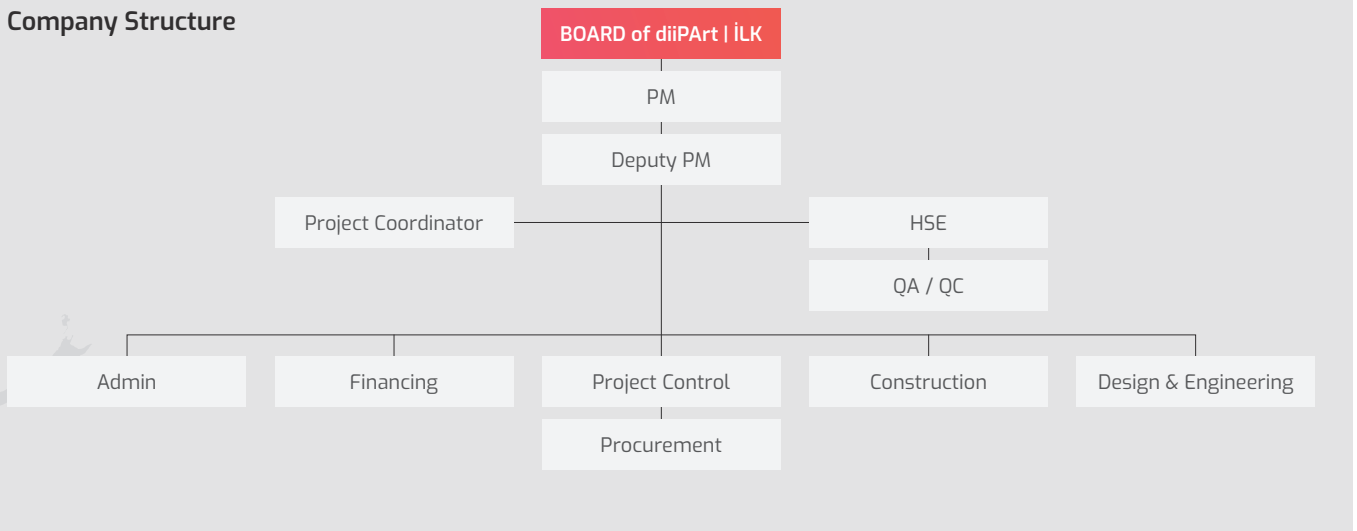
Design Principal

CONTRACTS MANAGEMENT

Stephen Chang Hai Young

Construction Manager

Company Structure



Human Resources, Health, Safety & Environment

HSE Policy Statement

Our company considers Health and Safety matters at work, and all activities are given top priority. This applies to all our employees and also affects top our working partners.

* diiPart | İLK has over 8000 highly qualified and reliable workforce which makes us a stable team.

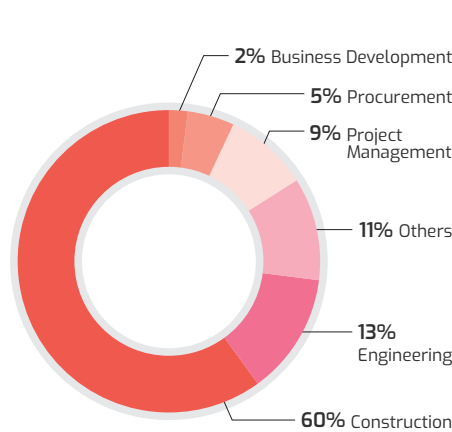
	2015	2016
Consultant	16	12
Manager (PM&CM, Qc, HSE)	90	78
Design Team	101	84
Architect - Engineer	171	158
Cost and Scheduling	35	31
Finance and Administration	172	164
Purchasing and Logistics	144	121
Marker & Cutter	170	186
Welder	961	854
Fitter	851	784
Fabricator	751	689
Rigger and Scaffolder	166	154
Insulator	98	96
Electrician & Instrumentation	364	328
Electrician for Building Works	394	358
HSE Team	224	189
QA/QC Team	144	124
NDT Team	98	86
Foreman	201	184
Operator / Driver	184	178
HVAC Fitter	231	199
Plumber / Glazier	148	124
Concreting Labourer	196	158
Steel Fixer	867	754
Form Worker	1,298	951
Finishing Worker	1,598	1,247
Sand Blaster & Painter	107	98
Start-up & Commissioning	48	41
ERP	12	12
Marine Worker	169	108
General Labourer	778	695
Total	10,782	9,245

It is the policy of our company:

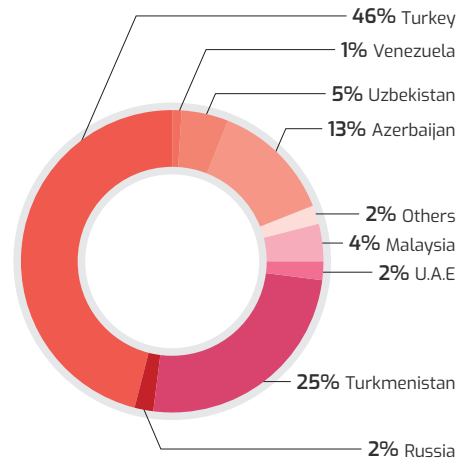
- To safeguard health, safety and welfare of all employees including temporary and contract staff or other persons that may be effected by our activities while at work, and to provide, so far as it reasonably practicable, working environments which are safe and without risk to health.
- To conduct its undertakings in such away as to ensure, so far as is
- Reasonably practicable, that people not in this employment, but who may be affected, are not exposed too risks to their health and safety.
- To recognize its obligation to meet all relevant legislative requirements pertaining to health and safety, which apply to any of our company's undertakings; to provide all employees health and safety induction training, supervision and information which is appropriate to the needs of their job and supervision as may be necessary to personnel at all levels and to bring safety matters to employees notice in all circumstances.
- To provide safe systems and safe places of work by making all necessary arrangements for the use, handling, storage and transport of materials and also machinery and plant we use in our work and under risk to health. To maintain arrangements for environmental control, medical facilities and welfare for our company's employees, emergency procedures, minimizing of the plan while keeping the measures to be taken under review.
- To promote personal responsibility and effort by employees at all levels to minimize risks.

It is the intention of our company that its activities will, as a minimum, comply with all relevant statutory provisions, and all reasonably practicable measures will be taken to minimize risk to its employees or others that may be affected by its operations. In every case, the highest practicable standard of health and safety will be pursued.

Global Operation Workforce



Workforce by Country



Quality

The quality policy approved by our company's managing directors and adopted by the entire personnel, control and implementation functions are as follows;

Our quality policy which can be evaluated as the output of our efforts, the employees of our company functioning in all levels, our aims contracted products or services to;

- Be delivered in a timely manner and at predetermined prices in order to meet the requirements and expectations of our clients.
- Meet all of the standards in terms of reliability, performance and safety
- Fulfil the requirements of the legislation and regulations.

The Company is committed to achieve quality in every phase of activity to meet customer's requirements.

1. We shall supply quality products and services that are delivered on schedule.
2. Our Quality Management System shall be based on the requirements of the ISO 9001 Standards.
3. We shall create a corporate culture of continuous improvement towards quality excellence.
4. The Company's greatest assets are its people and we shall implement a progressive Human Resources Development Policy to upgrade the knowledge and skills of our personnel to perform their jobs efficiently, productively and cost effectively.
5. A comprehensive safety program shall be enforced to instill safety awareness among all personnel and ensure a safe and healthy work environment.

Certifications

diiPart | ILK is ISO 9001, ISO 14001 and OHSAS 18001 certified, provides the highest level of quality construction works need, without exception, while respecting the environment and watching over the worker safety.

ISO 9001:2008 is an international quality management system standard which puts the consumer first. Customer satisfaction, our legal responsibilities and continual performance improvements are the standards upon which this certificate is granted by the International Organization for Standardization.

ISO14001:2004 is an international environmental management system standard which puts the environment first. How an organization minimizes any harmful effects to the environment caused by its activities is of primary concern. To achieve this certificate, an organization must be dedicated to improvements in its environmental practices and performances.

OHSAS 18001 is a British Standard for occupational health and safety management systems. It exists to help all kind of organizations put in place demonstrably sound occupational health and safety performance. It is widely seen as the world's most recognized occupational health and safety management systems standard.

CIVIL, ARCHITECTURAL & INFRASTRUCTURE PROJECTS

We are dedicated to provide professional and innovative service for our clients covering a wide variety of Civil, Infrastructure, Residential, Commercial, Industrial, Geotechnical and Environmental projects.



Convention Center Baku

Completed Projects

- 
- 01 Convention Center Baku
 - 02 National Gymnastic Arena
 - 03 Azersu QJSC New Office Tower
 - 04 Port Baku Residence
 - 05 Gipcak Resting Park
 - 06 Department of Defense Hotel
 - 07 Shahdag Resort Grand Hotel & Villa
 - 08 EPC of 'Merdana' Hotel
 - 09 Palladium 20 Store A-Class Business Centre & Small Hotel
 - 10 Baku White City Hotel
 - 11 Gabala Lake Palace Espace Chenot Health & Wellness Hotel
 - 12 Zekeriyakoy Villa Phase I & II
 - 13 Central Bank Residential Building
 - 14 EPCC of Residential Building
 - 15 EPC of Residential Building
 - 16 EPC of Residential Building (14th phase)
 - 17 AVRORA 16 & 25 Floor Residential Building & Closed Garage
 - 18 16 Floors Luxury Living Houses & Offices Pokrovskiy
 - 19 EPC of 'Kia-Hyundai' Automobile Sales & Service Center
 - 20 28 May Shopping Mall
 - 21 Atasehir ILK Dogus Plaza
 - 22 EPCC of Molokan Gardens Car Park
 - 23 EPC of School for 600 student Project
 - 24 EPC of Kindergarten Project for 160 Student
 - 25 Konya Hospital
 - 26 EPCC of Polyclinic
 - 27 EPC of Administrative Building
 - 28 UGMK Technical University Construction
 - 29 Baku City Bus Station 1 & 2 Road Safety Training Center
 - 30 Turnkey Turkmenistan Government Etalon (Metrology) Centre
 - 31 EPC of Administrative Building
 - 32 Inspiration Park
 - 33 Public Park Ashgabat city N. Halmammedow
 - 34 EPC of Ashgabat & Dashoguz Satellite Ground Control Stations
 - 35 EPCC of Rotation Camp of South Yoloten Gas Field Development
 - 36 EPCC of Baku Shipyard
 - 37 Ashgabat City Water Treatment
 - 38 EPIC of Mechanical Workshop
 - 39 Geotechnical Survey for GTP in CPF Area & Harbour Berth 5 & 6
 - 40 Geotechnical Survey at Hazar Harbour & Aladjja
 - 41 EPCC of Waste Disposal Facility

Convention Center Baku

Baku / Azerbaijan



Client.

State committee on property issues of
The Republic of Azerbaijan

Designer.

CoopHimmelb(l)au

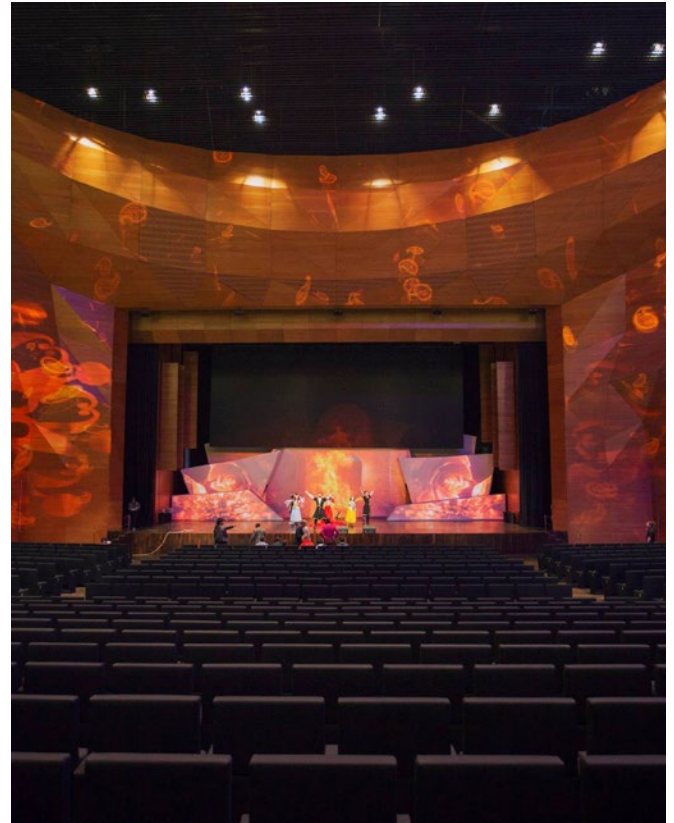
Scope of Works.

Procurement, Construction and
Commissioning of Convention Centre.

Main products

- Visitors: 4500 persons
- Service: 500 employees
- Auditorium: 3500 seats total, 1200 seats upper tier

The planned design and projected equipment will make it possible for events such as, conferences, banquets, concerts, trade shows, corporate presentations and performances of every different type to take place in this venue. The Auditorium can be used for electro acoustical performances and presentations. Nevertheless the building will be not designed for classical Opera and not for classical theatre.



National Gymnastic Arena

Baku / Azerbaijan



Client.

Pasha Construction

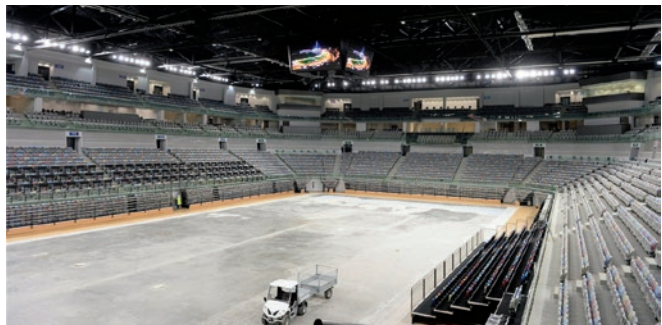
Scope of Works.

Construction of 6.000 seat capacity Arena for Rhythmic & Artistic Gymnastics.

On a day to day basis the NGA will be able to host gymnasts training for International competitions. The facilities for training gymnasts include offices / training halls / auditoriums / canteens / gymnasium.

As for the arena facilities, there are 2 main concourse levels with welfare facilities and food and beverage outlets, above them on the upper level of the arena will be the box level, which will host the VIP's in the various size luxury boxes.

There is also a large area for 2 storey restaurant with viewing capacity onto arena floor.



Azersu QJSC New Office Tower

Baku / Azerbaijan

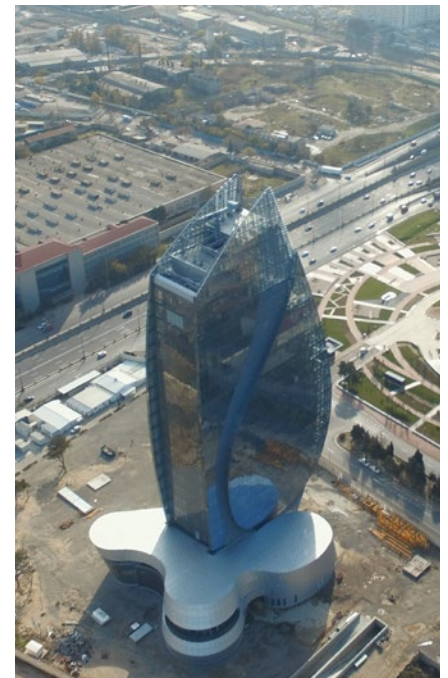


Client.

Azersu QJSC

Scope of Works.

Excavation, Waterproofing and RC Frame
Construction works of 124 m tower
consisting of 36.326 m² closed area.



Port Baku Residence

Baku / Azerbaijan



Client.

Pasha Construction

Scope of Works.

Pile cap breaking, excavation, compaction, gravel layering, insulation and structural works for 3 floor garage, 3 floor podium and 3 towers consisting of 32 floor residence floor.

Main products

- Total closed area: 375.000 m²
- Basement car park: 82.500 m²
- Podium(shopping mall, car park): 91.500 m²
- Residential(building): 201.000 m²
- Capacity of car park: 2.000 cars
- 1.200 dia. piles: 1.150 nos
- 800 dia. Jet-grout: 1.159 nos
- Form-work: 550.000 m²
- Rebar: 370.000 ton
- Concrete(C30-40): 166.000 m³



Gipcak Resting Park

Ashgabat / Turkmenistan



Client.

Ministry of Railway Transportation of Turkmenistan

Scope of Works.

Turn-key construction park project with 30 pieces fountains and green area.

Main Products

- Total Open Area: 58.500 m²
- Green Area: 35.500 m²
- Pool: 30 nos
- Marble Column: 32 nos
- Floor Granit: 2.800 m²
- Pressure Concrete: 8.800 m²
- Water Storage: 500 m³
- Engine Room: 10 nos
- Transformer: 2 pcs 400 KVA Dry Type Transformer
- Road Lights: 26 nos
- Decorative Lights: 211 aluminium pieces
- Tree: 1200 nos



Department of Defense Hotel [Turkmenbashi / Turkmenistan](#)



Client.

Rysgally Zähmet for Administration of the President
Turkmenistan

Shahdag Resort Grand Hotel & Villa [Shahdag / Azerbaijan](#)



Client.

Pasha Construction

Scope of Works.

RC construction of 2 five star hotels with a combined area of
50.000 m² 1 guest house, 2 VIP villas, and 1 VVIP villa.

EPC of 'Merdana' Hotel [Awaza / Turkmenistan](#)



Client.

Ministry of Defense of Turkmenistan

Scope of Works.

Turn – key construction of [Merdana] Hotel

Palladium 20 Store A-Class Business Centre & Small Hotel [Yekaterinburg / Russia](#)



Client.

Public Corporation Prodim

Scope of Works.

Reinforced concrete works of 20 floors business centre and small hotel complex.

Closed Area : 20.700 m²

Baku White City Hotel [Baku / Azerbaijan](#)



Client.

Pasha Construction

Scope of Works.

RC Frame & Block Work & Screed works of Hotel consisting of 80.000 m² closed area and 822 bed capacity.

Gabala Lake Palace Espace Chenot Health & Wellness Hotel [Gabala / Azerbaijan](#)



Client.

Gilan Holding LLC

Scope of Works.

Construction of 1 storey car park, 1 storey Spa, 1 storey restaurant and 5 storey hotel building, consisting of 26,000 m² closed area.

- Room number(pcs): 72 rooms + 3 villas
- Total number of beds: 83
- Total closed area: 32,000 m²
- Spa area: 6,500 m²
- Landscaping area: 240,000 m²

Zekeriyakoy Villa Phase I & II [Istanbul / Turkey](#)



Land Development Project

Scope of Works.

Phase I : Turnkey construction of 6 villas.

Phase II: Turnkey construction of 6 villas combined of 12 separate houses.

Main Products

Phase II: The site which has 12 independent parts include 6 triplex villas, 4 garden type duplex villas, 2 terrace type duplex villas.

The total area : 2.500 m²

Central Bank Residential Building [Ashgabat / Turkmenistan](#)



Client.

Central Bank of Turkmenistan

Scope of Works.

Turn-key construction of 12 floors 48 flats residential building.

Main Products

- Block numbers: 2
- Number of storeys: 12
- Number of flats: 48
- Closed area: 14.250 m²

EPCC of Residential Building [Ashgabat / Turkmenistan](#)



Client.

Daykhan Bank State Commercial Bank of Turkmenistan

Scope of Works.

Turn-key construction of 12 floors 72 flats residential building. Earthworks, civil works, mechanical and electrical works.

Main products

- Number of storeys: 12
- Number of flats: 72
- Closed area: 20.000 m²

EPC of Residential Building [Ashgabat / Turkmenistan](#)



Client.

Administration of The President of Turkmenistan

Scope of Works.

Engineering, procurement and construction of Residential Building.

Main products

- Closed area: 25.324 m²
- Shops: 3 nos
- Children play area: 1 nos
- Basketball area: 1 nos
- Tennis area: 1 nos
- Lifts 6 nos
- Houses 70 nos
- Type A – 2+1 – 180 m² – 22 nos
- Type B – 3+1 – 200 m² – 35 nos
- Type C – 4+1 – 215 m² – 13 nos

EPC of Residential Building [14th phase] [Ashgabat / Turkmenistan](#)



Client.

State Commodity and Raw Materials Exchange of Turkmenistan

Scope of Works.

Turn – key construction of Residential Building

Main products

- Closed Area: 23.500 m²
- Concrete Works: 19.500 m³
- Reinforcement: 4.200 Tons
- Number of Flats: 66
- Number of Storeys: 12
- Number of Lifts: 6
- Landscaping: 4.800 m²

AVRORA 16 & 25 Floor Residential Building & Closed Garage [Yekaterinburg / Russia](#)



Client.

Ural Garant

Scope of Works.

Reinforced concrete works of residential building project.

Main products

- 3 nos 16 floors and 1 nos 25 floors block with 390 flats
- Number of flats: 390 nos
- Closed area: 27.901 m²
- Closed Garage Project Avrora-1 floors block with 390 flats
- Closed garage: 3 nos
- Total capacity: 779 cars
- Closed area: 37.468 m²

16 Floors Luxury Living Houses & Offices Pokrovskiy [Yekaterinburg / Russia](#)



Client.

Stroy Zakas

Scope of Works.

Reinforced concrete and brick works of 16 floors residential flats, offices and parking garage.

Main products

- Concrete: 9.000 m³
- Re-bar: 1600 tons
- Brick: 26.5201 m²

EPC of 'Kia-Hyundai' Automobile Sales & Service Center [Ashgabat / Turkmenistan](#)



Client.

AÝYD Limited Company

Scope of Works.

Turn – key construction of [KIA-HYUNDAI] automobile sales and service center.

28 May Shopping Mall [Baku / Azerbaijan](#)



Client.

Pasha Construction

Scope of Works.

Dismantling existing ramp, additional slab construction and strengthening of existing columns.

Atasehir İLK Dogus Plaza [Istanbul / Turkey](#)



Land Development Project

Scope of Works.

Turnkey construction of 8 storey business plaza.

Main Products

Total floors: 4 level under ground. / 4 level above ground.
Total Area: 3.250 m²

EPCC of Molokan Gardens Car Park [Baku / Azerbaijan](#)



Client.

Pasha Holding

Scope of Works.

Engineering, procurement, construction and commissioning of 6 storey, 7.230 m² closed car park with 181 cars capacity.

EPC of School for 600 student Project [Ashgabat / Turkmenistan](#)



Client.

Administration of The President of Turkmenistan

Scope of Works.

Engineering, procurement and construction of school.

Main products.

- Closed area: 9.200 m²
- Closed sport hall: 2 nos
- Opened sport hall: 2 nos
- Conference Hall: 1 nos
- Amfi-theatre: 1 nos
- Computer class: 2 nos
- Lingofon class: 2 nos
- Laboratories : 3 nos

EPC of Kindergarten Project for 160 Student [Ashgabat / Turkmenistan](#)



Client.

Administration of The President of Turkmenistan

Scope of Works.

Engineering, procurement and construction of Kindergarten.

Main products.

- Closed area: 4.620 m²
- Swimming pool: 2 nos
- Gymnastic hall: 1 nos
- Music class: 1 nos
- Computer class: 1 nos
- Lingofon class: 2 nos
- Education class: 8 nos
- Every class has its own changing room, game(play) class, bedroom, kitchen, toilet.

Konya Hospital [Konya / Turkey](#)



Client.

Land Development Project

Scope of Works.

Investment.

55 bed general intensive care, cardiovascular surgery intensive care, coronary intensive care units, 45-bed neonatal intensive care unit with a total of 100 bed intensive care units; was designed using the latest possibilities of technology and hospital architecture.

EPCC of Polyclinic [Hazar / Turkmenistan](#)



Client.

Dragon Oil Ltd.

Scope of Works.

Design, procurement, construction and commissioning of 100 person per day capacity polyclinic building. Including technical building and storage tanks.

Main Products

- Closed area: 1.700 m²
 - Open area: 2.700 m²
 - Total area: 4.400 m²
- Procurement and installation of medical equipment.

EPC of Administrative Building [Ashgabat / Turkmenistan](#)



Client.

General Prosecutor's Office of Turkmenistan

Scope of Works.

Turn – key construction of Administrational Building

UGMK Technical University Construction [V. Pishma / Russia](#)



Client.

ODD Uralyevrostil

Scope of Works.

Reinforced concrete and block works of Technical University.

Baku City Bus Station 1 & 2 Road Safety Training Center [Baku / Azerbaijan](#)



Client.

Baku Bus MMC

Scope of Works.

EPC Buildings of bus station and training center including paving and landscape.

Baku City Bus Station 1&2

- Total Site Concrete Pavement: 155.000 m²
- Admin and Technical Buildings: 6.500 m²
- Workshop Building: 5.000 m²

Road Safety Training Center

- Total Area: 80.000 m²
- Admin Building: 600 m²
- Asphalt Road Construction: 45.000 m²
- Landscape: 35.000 m²

Turnkey Turkmenistan Government Etalon (Metrology) Centre [Ashgabat – Turkmenistan](#)



Client.

General Directorate of State Standards of Turkmenistan

Scope of Works.

Engineering, Turn Key construction, equipment installation (except special equipment and etalon specimens) and landscaping works of Etalon Centre on 1953rd Street (Yaşlar Street) in Ashgabat

EPC of Administrative Building [Turkmenbashi / Turkmenistan](#)



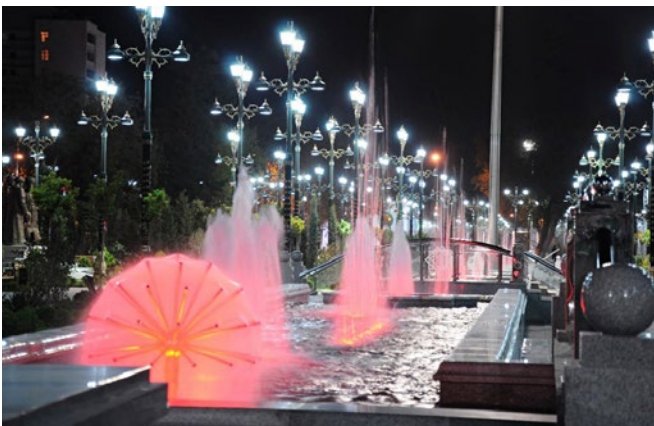
Client.

EPCC Hyundai Amco Naval Base Project

Engineering, procurement, construction and commissioning of Naval Base project which comprises ship shop, sport centre (with training swimming pool), naval administration head quarter, 400 persons barrack, indoor shooting range, medical point, club (200 seat), garages, warehouses, car wash, cafeteria (200 people), technical buildings, control department, apartments, kindergarten (48 students), workshops, access control point, sewage treatment plant and water desalination plant.

- Total closed area: 42.000 m²

Inspiration Park



Public Park Ashgabat city N. Halmammedow [Ashgabat / Turkmenistan](#)



Client.

Ministry of Communal Economy and Municipal Associations

Scope of Works.

Reconstruction (Renovation) of Ashgabat city N. Halmammedow park

Main Products

- Paving Area: 7.820 m²
- Granite Covering: 1.400 m²
- Trees: 1.208 nos.
- Lighting Poles: 96 nos.

EPC of Ashgabat & Dashoguz Satellite Ground Control Stations [Ashgabat / Turkmenistan](#)



Client.

Thales Alenia Space - CIFAL FZCO

Scope of Works.

Civil and Architectural works of Main site and Back-up site buildings.

EPCC of Rotation Camp of South Yoloten Gas Field Development [Yoloten / Mary / Turkmenistan](#)



Client.

Petrofac International (U.A.E.)

Scope of Works.

Engineering, Procurement, Construction and Commissioning of 712 persons capacity rotation camp including water treatment plant (RO), sewage treatment plant and other necessary facilities.

Total Closed Area : 18.826 m²

EPCC of Baku Shipyard Baku / Azerbaijan



Client.

Oil & Gas Trust SOCAR

Scope of Works.

Engineering, procurement, construction and commissioning of 24.000 m² closed area shipyard project steel and reinforced concrete buildings, infrastructure such as 1.000 m³ sewage treatment plant, area lighting works and other offsite utilities.

Main Products

- Cabling Works
- MV Cables: 155.000 m
- LV Cables: 45.000 m
- Piping Works: 160.000 dia-inch

Ashgabat City Water Treatment Ashgabat / Turkmenistan



Client.

CAI Interbudmontaz

Scope of Works.

Reinforced concrete works of city water treatment facility.

EPIC of Mechanical Workshop Hazar / Turkmenistan



Client.

Dragon Oil Ltd.

Scope of Works.

Turn-key construction of mechanical workshop and car wash building.

Main Products

- Workshop closed area: 1.016 m²
- Office closed area: 301 m²
- Car wash closed area: 105 m²

Geotechnical Survey for GTP in CPF Area & Harbour Berth 5 & 6 [Hazar / Turkmenistan](#)



Client.

Dragon Oil Ltd.

Scope of Works.

Bore holes, sampling, in-situ and laboratory testing.

Geotechnical Survey at Hazar Harbour & Aladjia [Hazar / Turkmenistan](#)



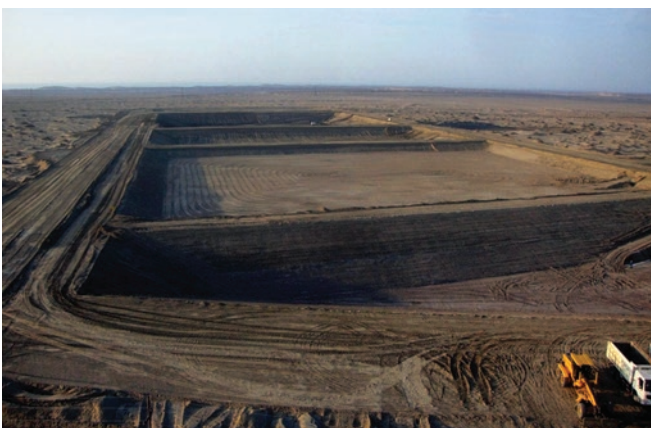
Client.

Dragon Oil Ltd.

Scope of Works.

Sea and ground surveys at parts of the Caspian and Aladjia Land.

EPCC of Waste Disposal Facility [Hazar / Turkmenistan](#)



Client. Dragon Oil Ltd.

Scope of Works.

Design and construction of 15 year capacity of hydrocarbon, non-hydrocarbon and domestic wastes disposal / storage cells.

Main Products

- 250.000 m² Insulation of the disposal cells
- Design and construction of 4.000 m asphalt road
- Re-construction / repair of 4.500 m asphalt road
- Geo-technical survey of 140.000 m²
- Electrical design and installation

CIVIL, ARCHITECTURAL & INFRASTRUCTURE PROJECTS

We are dedicated to provide professional and innovative service for our clients covering a wide variety of Civil, Infrastructure, Residential, Commercial, Industrial, Geotechnical and Environmental projects.



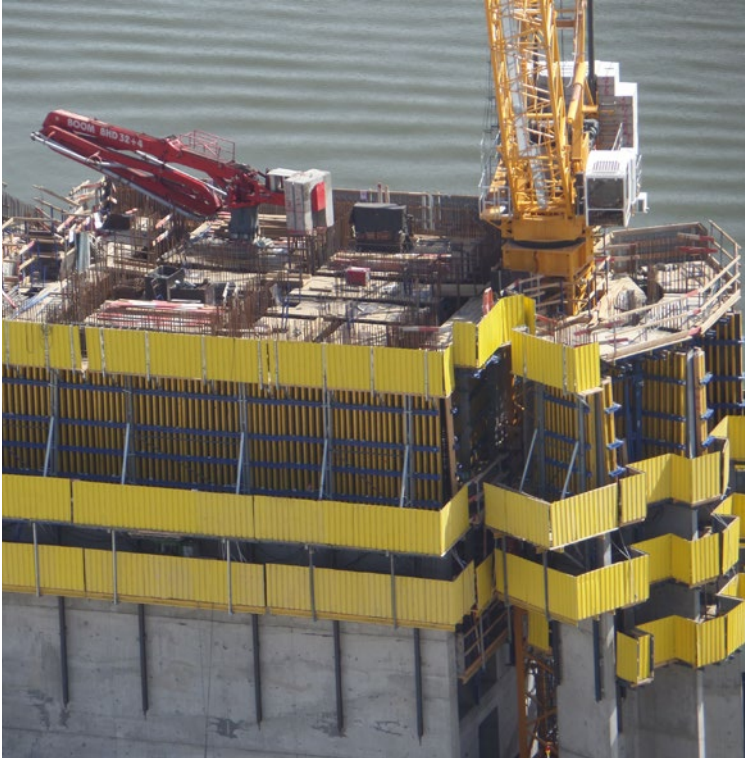
Projects in Progress

- 01 Crescent Development
- 02 Nurafshon Smart City
- 03 SMC Hotel Complex
- 04 Resort Complex Development
- 05 SMC Silk Road
- 06 Baku Sovyetski Park
- 07 Izmir Hospital
- 08 EPC of Health Centre
- 09 Public Park Ashgabat City Trade Unio
- 10 Road Works of Ethane Cracker Plant
- 11 Yacht Club
- 12 Hotel 2
- 13 EPC of Residential Buildings for Frontier unit



Crescent Development

Baku / Azerbaijan



Client.

Gilan Holding LLC

Scope of Works.

Construction of subsea 3 storey car park, 8 storey podium and 170m of tower building. Production items include; earthworks, pile cap breaking, waterproofing, reinforced concrete works , earthing & lightning protection works, storm water disposal system works.

The Employer's vision for the Crescent Development Project is to create a unique landmark development for the whole region, in Baku, the gateway to Azerbaijan.

The themed Crescent Hotel offshore, and the Crescent Place (residential and retail) and Crescent City (office) developments are designed to create vibrant internal and external spaces, finished to the highest quality, which will draw visitors from within Azerbaijan and abroad.

Seven star luxury hotel guest rooms and guest apartments will be provided in the Hotel to create the highest quality of service. Retail areas and parking will be provided for residents, staff, and visitors.

- 35 storey tower height 170 m.
- 52 storey tower height 210 m.

Main Quantities

- Concrete: 285.000 m³
- Form Work: 750.000 m²
- Reinforcement Bar: 78.000 tons
- Structural Steel: 5.100 tons



Nurafshon Smart City

Nurafshon / Uzbekistan



Main products

- Property Area: 2,460,000 m²
- Population: Approx. 20,000
- Program:
 - Residential: 22.3%
 - Commercial: 8.5%
 - Gov. Residential: 3.4%
 - Cultural: 5.5%
 - Semi-Residential: 11.7%
 - Park: 13.6%
 - Business Office: 3.9%
 - Road Area: 26.0%
 - Gov. Business Office: 5.1%



SMC Hotel Complex

Samarkand / Uzbekistan



Main products

- Property Area: 11,761 m²
- GFA: 6,200 m²
- Gross Room (329 keys):
 - Serviced Residence: 95 keys
 - Business Hotel: 23 keys



Resort Complex Development

Bukhara / Uzbekistan



Main products

- Property Area: 126,906 m²
- Program
 - Hotel1: 21,036 m²
 - Hotel2: 20,176 m²
 - Bazaar: 10,340 m²
 - Convention: 3,800 m²
 - Tea House: 1,700 m²
 - Amenities: 2,060 m²



SMC Silk Road

Samarkand / Uzbekistan



Main products

- Property Area: 116,871 m²
- GFA: 83,860 m²
- Program
 - Residential: 21,850 m²
 - Hotel: 23,790 m²
 - Pool Villa: 900 m²
 - Retail: 28,450 m²
 - Cultural Facilities: 6,520 m²
 - Spa: 1,000 m²
 - Information Center: 1,350 m²



Baku Sovyetski Park

Baku / Azerbaijan

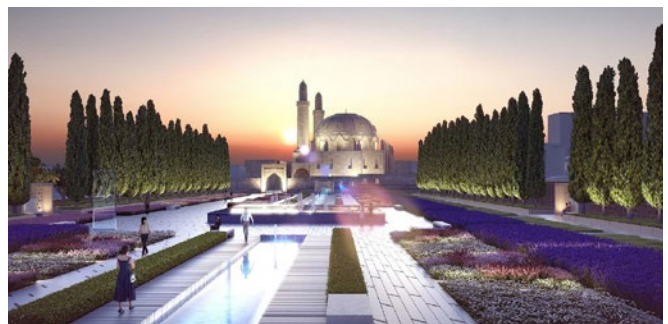


Client.

Azeravtoyol Asc

Scope of Works.

Engineering, procurement, construction and commissioning of service buildings and landscaping works covering 11 hectare land in Baku city center.



Izmir Hospital

Izmir / Turkey



Land Development Project

Scope of Works.

Engineering, procurement, construction and commissioning of Hospital Building.

- 140 Patient rooms
- 50 intensive care unit beds
- 28 Neonatal intensive care unit beds
- 13 Emergency Department Observation Unit Beds
- 16 Observation beds



EPC of Health Centre [Kaakha / Turkmenistan](#)



Client.
Municipality of Akhal velayat

Public Park Ashgabat City Trade Union [Ashgabat / Turkmenistan](#)



Client.
Ministry of Communal Economy and Municipal Associations

Scope of Works.
Reconstruction(Renovation) of the park of Ashgabat city Trade Union

Main products

- Total Area: 47.356 m²
- Paving Area: 18.887 m²
- Playground: 3 sets
- Trees: 16.398 nos.
- Lighting Poles: 213 nos.

Road Works of Ethane Cracker Plant [Turkmenbashy / Turkmenistan](#)



Client.
Hyundai Engineering Co. Ltd

Scope of Works.
Construction of Asphalt and Concrete Road of Ethane Cracker and Polyethylene and Polypropylene Plant

Yacht Club [Turkmenistan](#)



Hotel 2 [Awaza / Turkmenistan](#)



EPC of Residential Buildings for Frontier unit [Serhetabat / Turkmenistan](#)



Client.

The State Frontier service of Turkmenistan

Main products

- Closed Area: 17.000 m²
- Concrete Works: 10.200 m²
- Reinforcement: 1.550 tons
- Form Works: 25.480 m²
- Number of Building: 2
- Number of Storeys: 5



Crawler Cranes

Capacity	Model	Quantity
1,600 tons	Terex CC 8800	1
600 tons	Demag CC 2800	2
250 tons	Manitowoc M-250	2
250 tons	Liebherr LR 1250	1
55 tons	Kobelco 7055	1
55 tons	XCMG	1

Hi-Up Cranes

Capacity	Quantity
35 tons	6
40 tons	3
50 tons	2
55 tons	2
60 tons	2
65 tons	2

Mobile Cranes

Capacity	Quantity
25 tons	4
50 tons	24
75 tons	8
100 tons	4
130 tons	1

Other Cranes

Description	Capacity	Quantity
Tower Crane	8 / 10 tons	24
Derrick Crane	20 tons / 300tm	2
Portal Crane	5 tons	6

CONSTRUCTION EQUIPMENT LIST

diiPART | ILK has many high technology and capacity equipment to provide a range of engineered solutions for transporting, lifting and installing heavy items. Multiple operations can be integrated while planning and project management services are also provided.



Description	Capacity	Quantity
Forklift	7 tons	8
Forklift	7 tons	5
Forklift	7 tons	2
Man Basket	16.5 m	4
Man Basket	15 m	5
Scissor Type Man Lift	8 m	5
Scissor Type Man Lift	12 m	4
Excavator	1 m ³	11
Excavator	1.2 m ³	7
Bulldozer		6
Wheel Loader	4.3 m ³	5
Wheel Loader	3.2 m ³	6
Wheel Loader	2.1 m ³	3
Grader		4
Skid Steer Loader		6
Backhoe Loader		8
Mini Excavator		2
Roller	15 tons	6
Roller	11 tons	4
Plate Compactor	250-300 kg	11
Vibratory Rammer	71 kg	6
Double Drum	650-900 kg	9
Dump Truck	40 tons	18
Mixer Truck	6 m ³	3
Mixer Truck	8 m ³	14
Stationary Concrete Pump	65 m ³ / h	8
Mobile Concrete Pump	60 m ³ / h	6
Mechanical Concrete Distributor		9
Hydraulic Concrete Distributor		14
Brick Plant	3,000 pcs / day	2
Batching Plant	65 m ³ / h	3
Mobile Batching Plant	60 m ³ / h	4
Concrete & Soil Laboratory		3
Lorry	5 tons	4
Flat Bed Trailer	35 tons	8
Flat Bed Trailer	40 tons	5
Flat Bed Trailer	50 tons	7
Cement Trailer	35 tons	3
Diesel Truck	10 tons	4
Water Tank Truck	10 / 20 tons	8
Mobile Water Truck	50 tons	2
Maintenance Truck		2
Sewage Truck	10 / 20 tons	8
Car		54
Bus		32
Minibus		19
Pick-up 4WD		21

Our success as diiPART | ILK,

most sought after construction company, is complimented by the high quality and reliability of our machines, manufactured by the world's leading companies. All of our machinery and equipment undergo regular servicing, to ensure peak performance and maximum productivity at all times.

Jet Grouting & Piling Equipment

Description	Capacity	Quantity
Diesel Pile Hammer	219 kNm	1
Vibratory Pile Hammer		1
Rotary Drilling Rig	Soilmecc Sr40	1
Multi Use Drill	MTD 180-B	1
Mixer Plant	Techniwell TWM	1
Jet Grouting Pump	TW4005	1

NDT Equipment

Description	Quantity
Programmable	5
Survey Meter	1
Densitometer	1
Stainless Steel Film	3
Test Block 5 Step	1
Type SC AWS Block	1
Transducer	1
MPI Set	5
Computer Sc Digital	6
Ultrasonic Flaw	5
DYE Penetrant Set	5
Welding Gauge Kit	5
Portable X-Ray Set	3
Ultrasonic Set	10
Radioactive Test Set	5
Hardness Testing Set	5
X-Ray Set	7
Elcometer	15
Feriscopemeter	2
PWHT Set	14
Gamma Ray Set	10

Welding Equipment

Description	Quantity
Welding Machine – SMAW / GTAW	524
Welding Machine – FCAW	20
Welding Machine – SAW	14
Electrode & Owen Thermos	2 sets

Other Equipment

Description	Quantity
Compressor	56
Generator	53
Morton Cutting Machine	4 sets
CNC Plasma Cutting Machine	2 sets
Plasma Pipe Cutting Machine	2 sets
Pipe Cutting Machine (Mathey)	10 sets
Sheet Cutting & Beveling Machine	6 sets
Rotator (30 - 60 – 100 ton)	10 sets
Rolling & Bending Machine	1 set
Weight Bridge – 80 ton	8
Total Station	14
GBS (land & offshore)	5

CONTACT

Head Office

SINGAPORE

Singapore

152 Beach Road, #08-06/08, Gateway East, Singapore, 189721

Tel : +65 6909 5960

Fax : +65 6909 5950

Branches

TURKEY

Istanbul

Yenisehir District Arif Street No:2
34779 Atasehir

Tel : +90 (216) 455 55 44

Fax : +90 (216) 455 55 88

SOUTH KOREA

Seoul

16th Floor, 479 Bongeunsa-ro,
Gangnam-gu, Seoul,
Republic of Korea, 06095

Tel : +82 2 6952 3818

Fax : +82 2 6930 4116

KINGDOM OF SAUDI ARABIA

Al Khobara

Office No. 303, Third Floor, Burj Alfardan
Prince Turki Bin Abdulaziz Street, 31952

AZERBAIJAN

Baku

AZ1010, Baku City, Nasimi District,
100C Nizami Street, Non-Residential Area,
3rd Floor

Tel/Fax : +994 (12) 498 11 53

U.A.E.

Dubai

Lotus Plaza, 4B Street, Al Quoz

Tel : +971 4 3806666

Fax : +971 4 3466668

UZBEKISTAN

Tashkent

24-a, block D, Nukus Street, Tashkent City,
Republic of Uzbekistan, 100015

T. +99 89 0997 0004

RUSSIA

Moscow

Rozhdestvenka Street, Building 5/7 Block 2,
Office P V, K7, 107031

Tel : (+7 343) 283 0641 – 42

Fax : (+7 343) 283 0643

Yekaterinburg

Soboleva 19, Block No.8
First Floor, 620036

TURKMENISTAN

Ashgabat

43 Shors Street

Tel : +993 (12) 76 03 16

Fax : +993 (12) 76 03 17

diiPART | iLK

Design + Engineering, Procurement, Construction